

DATASHEET

MARANTÉ H

Maxwood Washrooms
121-131 Rosebery Avenue
London
EC1R 4RF

call 020 3657 7615
email inspired@maxwoodwashrooms.com
visit www.maxwoodwashrooms.com



KEY FEATURES

01

Soft close doors on fall-to-close hinges used to maintain flush appearance

02

Available in any HPL finish

03

44mm thick ABS lipped doors with 32mm thick division panels

04

Solid stainless steel ironmongery, available in a range of colours

05

Full height and made to measure

06

Versatile - can be installed in conjunction with dividing stud partition walls



MARANTÉ H HPL

Specifications

DIVISIONS

Core material: 30mm high grade particle board
650kg/m³ supplied in two parts.

Colour/ Finish: High pressure laminate as per client choice giving 32 mm overall panel thickness.

Edge treatment: All edges lipped in impact-resistant ABS with polyurethane adhesive (see below).

Adhesive Type: All components are bonded with specialist polyurethane washroom adhesive, for ultimate water-resistance and strength of bonding. This adhesive is environmentally friendly with its zero rating on formaldehyde emissions.

DOORS & PILASTERS

Core material: 44mm high grade particle board
650kg/m³.

Colour/Finish: High pressure laminate as per client choice giving 44mm overall panel thickness.

Edge treatment: All edges lipped in impact-resistant ABS with polyurethane adhesive (see below).

FIXING

Division to rear wall: Aluminium T-section fixed into pre-grooved division.

Division to pilaster: Concealed high-strength mechanical fixings.

Division/pilaster to floor & ceiling: Aluminium powder coated channel secured to floor. Division is pre-grooved and placed over the channel, raising it by 20mm and preventing contact with mopping water.

End Pilaster to wall: Fully adjustable aluminium shadow detail.

IRONMONGERY

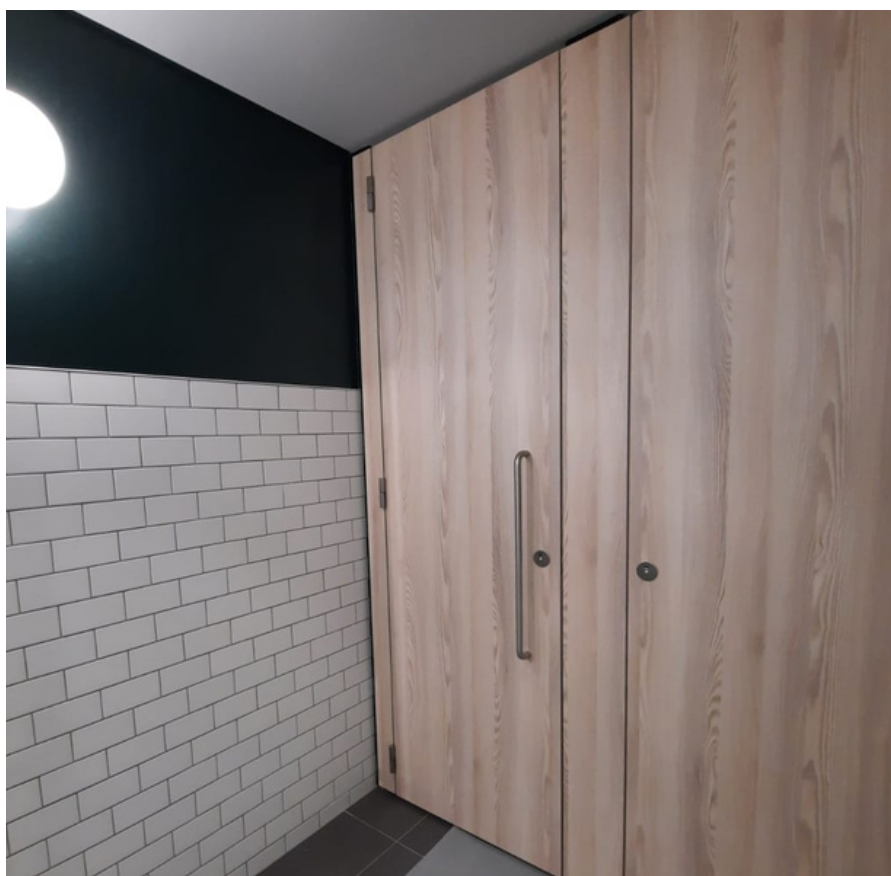
Hinges: Solid stainless steel butt hinges (fall to close)

Indicator bolt: Solid stainless steel mortise lock with lever operated turn action.

Damper: Hidden hydraulic soft close mechanism to all doors

Internal fixings: Buffered coat hooks in stainless steel.

External fixings: Stainless steel pull handle to outward opening doors.



SIZE

Overall height: To suit ceiling heights up to 3000mm

Division (h x w): To suit ceiling height x 1500mm

Door: (h x w): To suit ceiling height x site dimensions

Centre pilasters (h x w): To suit ceiling height x site dimensions

End pilaster (h x w): To suit ceiling height x site dimensions (min. width 100mm)



020 3657 7615



inspired@maxwoodwashrooms.com



www.maxwoodwashrooms.com



Maxwood Washrooms
121-131 Rosebery Avenue
London
EC1R 4RF

GET IN TOUCH

Maxwood Washrooms
121-131 Rosebery Avenue
London
EC1R 4RF

call 020 3657 7615
email inspired@maxwoodwashrooms.com
visit www.maxwoodwashrooms.com

