



Experience washrooms that go beyond.

The Washroom Studio River House 143-145 Farringdon Road London EC1R 3AB

Call 024 7662 1122

Email inspired@maxwoodwashrooms.com

Visit www.maxwoodwashrooms.com



Xeista

CAUSTORA

A mainstay of the Xeista family, Xeista Caustora embodies the classic lines of a traditional vanity counter top with inset basins, providing a perfect mix of style and practicality. The availability of many under-panel configurations, as well a plethora of material finishes make this vanity unit the perfect foundation for a statement vanity design.

Outstanding range of materials including natural stone, terrazzo, concrete, composite stones, Durat® & all Corian® equivalent solid surfaces.

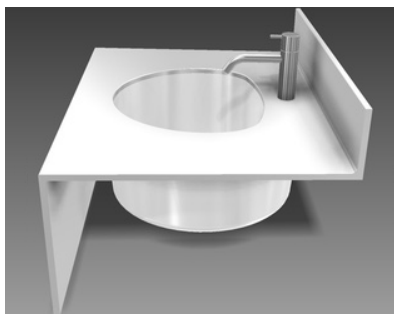
Made to measure from bespoke project designs

Option for floating top or under-panels/base units

Compatible with integral basins, undermounted basins and vessel basins

Supported by structurally calculated mild steel brackets where necessary

Coordinated design to integrate with all tap, dispenser and bin types



Specifications

XEISTA CAUSTORA

Reference: Maxwood XEISTA CAUSTORA Range

VANITY TOP

Core Material: Stone or solid surface material of client's choice, including upstands & downstands where required. Wash hand basins can be integral or under-mounted/vessel counter-mounted by others.

Colour/Finish: As per client choice.

Edge treatment: All exposed edges are radiused/chamfered and polished.

FRAMING

Core Material: 18mm exterior-grade plywood substrate.

Brackets: Bespoke mild steel brackets in PPC finish, required for floating vanity tops.

PANELS (WHERE REQUIRED)

Core Material: 18mm moisture resistant particle board 650kg/m3.

Colour/Finish: High pressure laminate, as per per client choice.

Edge Treatment: All edges lipped in impact-resistant ABS with polyurethane adhesive (see below).

Adhesive Type: All components are bonded with specialist polyurethane washroom adhesive, for ultimate water-resistance and strength of bonding. This adhesive is environmentally friendly with its zero rating on formaldehyde emissions.

Fixing: Panels fixed to laminate front facings with heavy duty nylon lift-off/push-fit concealed clips.

OPTIONAL ENHANCEMENTS

- Under panels finishes:
 - Real wood veneer
 - Glass
 - Stone
 - Corian® and equivalent solid surfaces
 - PVD finished stainless steel
- Hinged access panels using 110° cupboard hinges (locks supplied on request)
- Base units for cupboard storage
- Glass splashbacks
- Light pelmets and/or 'goal-post surrounds'
- Integral bins with polished bin-cut-outs
- Free-standing 'island' vanity design
- Other bespoke features available on request.

Note: Any optional enhancements required to be clarified at point of specification.

Experience washrooms
that go beyond.

The Washroom Studio River House 143-145 Farringdon Road London
EC1R 3AB
Call 024 7662 1122
Email inspired@maxwoodwashrooms.com
Visit www.maxwoodwashrooms.com





Experience washrooms that go beyond.

The Washroom Studio River House 143-145 Farringdon Road London EC1R 3AB

Call 024 7662 1122

Email inspired@maxwoodwashrooms.com

Visit www.maxwoodwashrooms.com



Xeista

CASCADE

A popular item in the Xeista family, Xeista Cascade is a vanity trough defined by its signature sloping counter. This provides an exceptional blend of style and practicality, allowing used water to cascade gently into the rear drainage gulley. The availability of many under-panel configurations, as well as a plethora of material finishes make this vanity unit the perfect foundation for a statement vanity design.

Outstanding range of materials including natural stone, terrazzo, concrete, composite stones, Durat® & all Corian® equivalent solid surfaces.

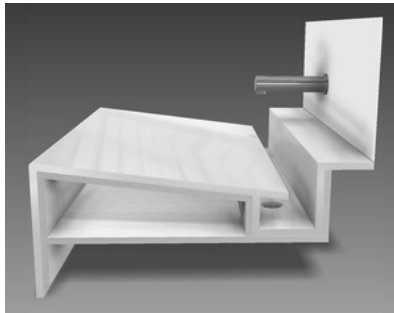
Divider pieces can be added to create separate hand wash spaces

Made to measure - bespoke designs available

Option for floating top or under-panels/base units

Supported by structurally calculated mild steel brackets where necessary

Coordinated design to integrate with all tap, dispenser and bin types



Specifications

XEISTA CASCADE

Reference: Maxwood XEISTA CASCADE Range

VANITY TOP

Core Material: Stone or solid surface material of client's choice, including sloping trough counter, downstands and upstands where required.

Colour/Finish: As per client choice.

Edge treatment: All exposed edges are radiused/chamfered and polished.

FRAMING

Core Material: 18mm exterior-grade plywood substrate.

Brackets: Bespoke mild steel brackets in PPC finish, required for floating vanity tops.

PANELS (WHERE REQUIRED)

Core Material: 18mm moisture resistant particle board 650kg/m3.

Colour/Finish: High pressure laminate, as per per client choice.

Edge Treatment: All edges lipped in impact-resistant ABS with polyurethane adhesive (see below).

Adhesive Type: All components are bonded with specialist polyurethane washroom adhesive, for ultimate water-resistance and strength of bonding. This adhesive is environmentally friendly with its zero rating on formaldehyde emissions.

Fixing: Panels fixed to laminate front facings with heavy duty nylon lift-off/push-fit concealed clips.

OPTIONAL ENHANCEMENTS

- Under panels finishes:
 - Real wood veneer
 - Glass
 - Stone
 - Corian® and equivalent solid surfaces
 - PVD finished stainless steel
- Hinged access panels using 110° cupboard hinges (locks supplied on request)
- Base units for cupboard storage
- Glass splashbacks
- Light pelmets and/or 'goal-post surrounds'
- Integral bins with polished bin-cut-outs
- Free-standing 'island' vanity design
- Other bespoke features available on request.

Note: Any optional enhancements required to be clarified at point of specification.

Experience washrooms
that go beyond.

The Washroom Studio River House 143-145 Farringdon Road London
EC1R 3AB
Call 024 7662 1122
Email inspired@maxwoodwashrooms.com
Visit www.maxwoodwashrooms.com





Experience washrooms that go beyond.

The Washroom Studio River House 143-145 Farringdon Road London EC1R 3AB

Call 024 7662 1122

Email inspired@maxwoodwashrooms.com

Visit www.maxwoodwashrooms.com



Xeista

CASK

Xeista Cask is the original vanity trough, encapsulating a beautifully simple trench profile. Its clean lines will complement any washroom interior and the monolithic form is one of the most cost effective vanity top designs. The availability of many under-panel configurations, as well a plethora of material finishes make this vanity unit the perfect foundation for a bold vanity design.

Outstanding range of materials including natural stone, terrazzo, concrete, composite stones, Durat® & all Corian® equivalent solid surfaces.

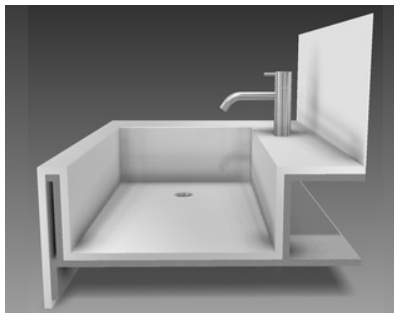
Coved internal edges on solid surface tops to prevent limescale build-up

Made to measure - bespoke designs available

Option for floating top or under-panels/base units

Supported by structurally calculated mild steel brackets where necessary

Coordinated design to integrate with all tap, dispenser and bin types



Experience washrooms
that go beyond.

The Washroom Studio River House 143-145 Farringdon Road London
EC1R 3AB
Call 024 7662 1122
Email inspired@maxwoodwashrooms.com
Visit www.maxwoodwashrooms.com



Specifications

XEISTA CASK

Reference: Maxwood XEISTA CASK Range

VANITY TOP

Core Material: Stone or solid surface material of client's choice, including trough, downstands and upstands where required.

Colour/Finish: As per client choice.

Edge treatment: All exposed edges are radiused/chamfered and polished.

FRAMING

Core Material: 18mm exterior-grade plywood substrate.

Brackets: Bespoke mild steel brackets in PPC finish, required for floating vanity tops.

PANELS (WHERE REQUIRED)

Core Material: 18mm moisture resistant particle board 650kg/m³.

Colour/Finish: High pressure laminate, as per per client choice.

Edge Treatment: All edges lipped in impact-resistant ABS with polyurethane adhesive (see below).

Adhesive Type: All components are bonded with specialist polyurethane washroom adhesive, for ultimate water-resistance and strength of bonding. This adhesive is environmentally friendly with its zero rating on formaldehyde emissions.

Fixing: Panels fixed to laminate front facings with heavy duty nylon lift-off/push-fit concealed clips.

OPTIONAL ENHANCEMENTS

- Under panels finishes:
 - Real wood veneer
 - Glass
 - Stone
 - Corian® and equivalent solid surfaces
 - PVD finished stainless steel
- Hinged access panels using 110° cupboard hinges (locks supplied on request)
- Base units for cupboard storage
- Glass splashbacks
- Light pelmets and/or 'goal-post surrounds'
- Integral bins with polished bin-cut-outs
- Free-standing 'island' vanity design
- Other bespoke features available on request.

Note: Any optional enhancements required to be clarified at point of specification.